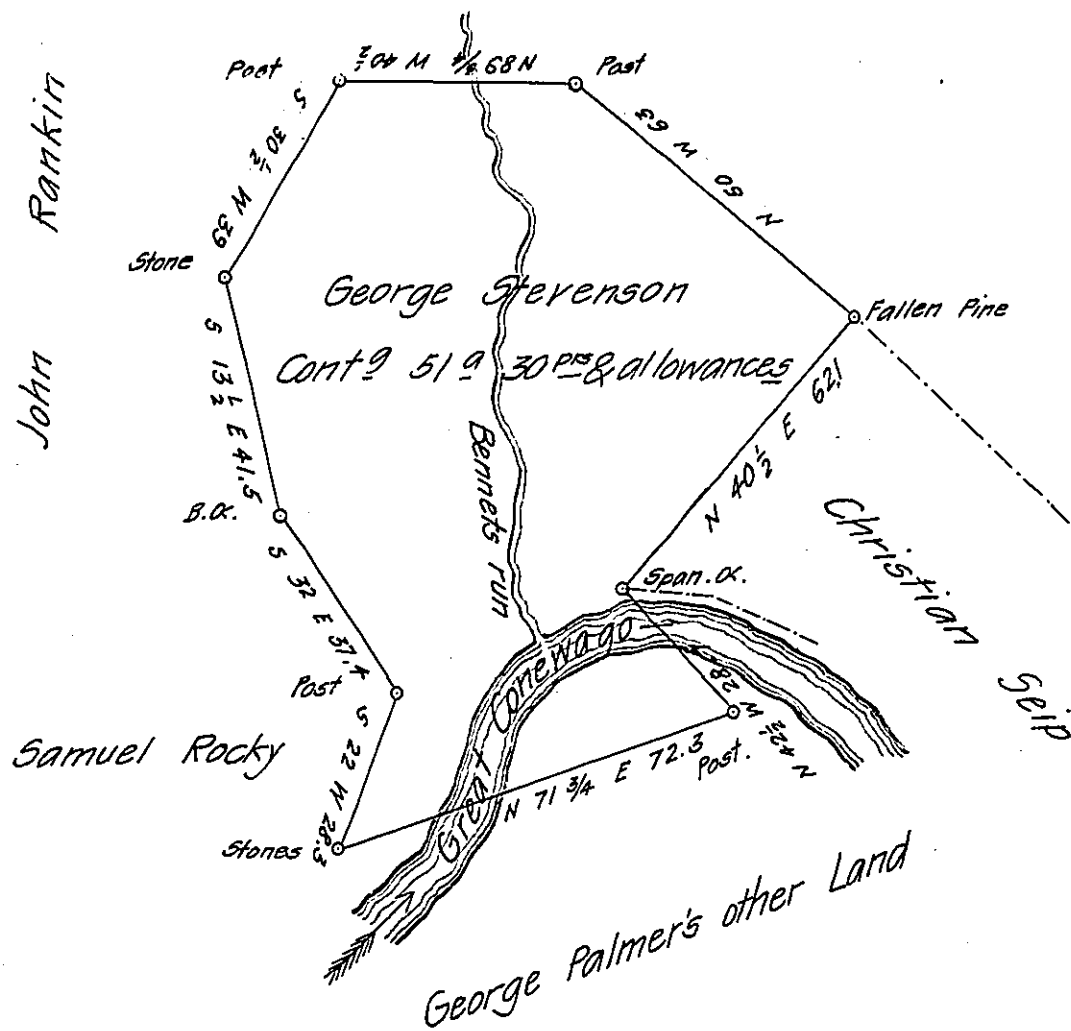


- Reiff's Land



A draught of a Piece of Land situate chiefly in Newbury Town-  
 ship and the lesser part in Conewago Township in the County of York. Con-  
 taining as above set forth 51 a 30 ps and allowances &c. Surveyed on the  
 12<sup>th</sup> day of April A. D. 1833 in Pursuance of a Warrant granted to  
 George Stevenson for 50<sup>a</sup> dated the 18<sup>th</sup> December 1751. The land above  
 represented is now owned by Phillip Fetro and George Palmer. No access to  
 any papers could be had &c.

To the

Danl Small Contr.

Board of Property

IN TESTIMONY that the above is a copy of the original remaining on file in  
 the Department of Internal Affairs of Pennsylvania, made  
 conformably to an Act of Assembly approved the 16th day of  
 February, 1833, I have hereunto set my Hand and caused  
 the Seal of said Department to be affixed at Harrisburg,  
 this fifteenth day of December 1908

*Henry Houck*  
 Secretary of Internal Affairs.